



Making the dream work

Annual Review
2022 - 2023

Gloucestershire
Gateway Trust

community-driven development

Foreword

"I joined Gloucestershire Gateway Trust as a trustee officially in January 2023, along with Pip Levett from Play Gloucestershire. I was very honoured to gain this position as I have a lot of respect and admiration for all of the work that has been achieved over the years for the community.

I grew up in Gloucester and have worked within careers guidance for 20 years and wanted to use the knowledge and skills I have developed in my career to date to support the work that the Trust has achieved, working at grassroots level, finding opportunities for people within the community to take forward as well as working with key organisations who can help further the reach for the community.

In the last year there has been lots of positive work that has taken place including the Bridging the Gap courses and the amazing Channel 4 documentary 'A Cotswold Farmshop' which showcased the solid partnership between the trust and the Westmorland Family, as well as showcasing local businesses which was truly inspiring. I know there is much more to come, and I am excited to be a part of the journey."



Monique Smith
Trustee

Financial review of the year to 31 March 2023

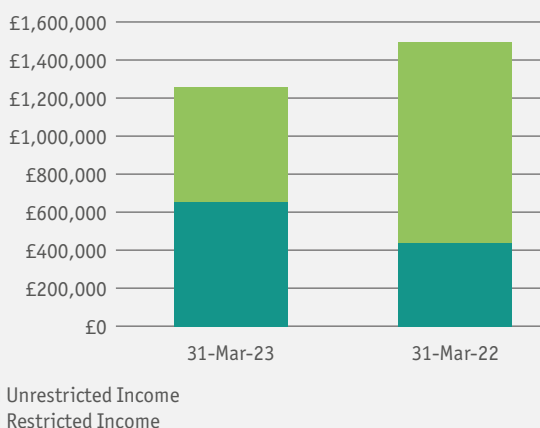
Gloucestershire Gateway Trust (GGT) receives two types of income: Restricted Income and Unrestricted Income. Unrestricted Income can be used for GGT's general charitable purposes, general running costs including identifying and obtaining new sources of income or can be added to reserves for use in future years.

Although the financial year 2022/23 has seen GGT receive reduced income compared with 2021/22 (£1.3 million compared with £1.5 million), the mix between Restricted and Unrestricted Income meant that GGT was less constrained on how income could be spent.

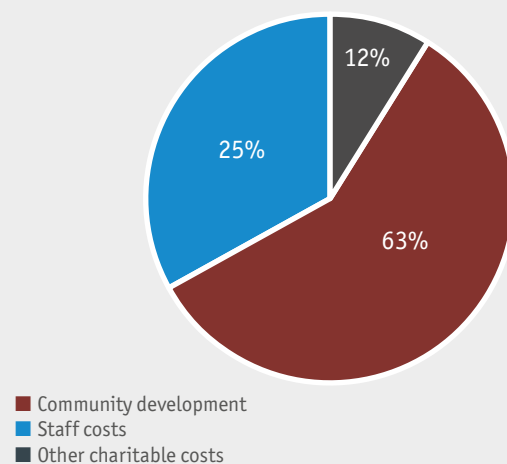
Restricted Income reduced, primarily due to the channelling of emergency COVID-19 support through GGT during the 2021/22 financial year together with Restricted Income from the Holiday Activities and Food programme (HAF) during that year to support families in receipt of free school meals. Overall Restricted Income fell from £1.1 million to £600,000 in 22/2023 compared with 21/2022.

Unrestricted Income increased, in part due to sales levels at Gloucester Services continuing to recover from the worst economic impacts of COVID-19, and GGT receiving between 2p and 3p of every £ of non-fuel sales as Unrestricted Income to support our community work. Unrestricted Income increased from £450,000 to £660,000.

Split of Income between Restricted and Unrestricted



Charitable expenditure





Our vision

We are working towards a world of welcoming communities, comprising of motivated and connected people living in neighbourhoods where everyone is valued, people can influence decisions that affect their lives and create lasting solutions to local challenges.

We know that every resident and community has strengths and resources that could be shared and we aim to help unlock these for everybody's long-term benefit.

Our mission

To enable community-led transformation of local social, economic and environmental conditions, through encouragement, mutual respect and collaboration.

The communities we work alongside

Gloucestershire Gateway Trust was set up to have a particular focus on the social housing estates of Matson, Robinswood, White City, Podsmead, Tuffley and Stonehouse.

In our analysis of the Indices of Multiple Deprivation 2019 (the most recent Indices), two of these communities ranked as the top most 'deprived' areas in the county.

However, although they are considered relatively disadvantaged in traditional economic terms, they are rich in social capital – something not often quantified in traditional measures of growth and prosperity.



Neighbourhood Learning and Work

- Our trust remains committed to the principle that high-quality jobs and education are essential to improving the lives of people and families in the communities we work alongside. Neighbourhood learning opportunities are crucial in breaking down barriers to accessing education, boosting individual confidence, and connecting people to opportunities in their communities.
- Gloucestershire Gateway Trust will continue to bring key stakeholders together to maximise the potential of people living in local neighbourhoods. We will continue to do this through our stake in the Gloucester Services business, where we aim for over 25% of staff residing in our target communities.
- Beyond our business, we will continue to connect local people to regeneration opportunities, whether through social investments like the Blackbridge development in Podsmead, or private investments such as housing development on the edge of Matson.



Bridging the Gap

- Bridging the Gap is a free course created by Gloucestershire Gateway Trust in partnership with Gloucester Services, to give people who are interested in working at Gloucester Services but who may struggle with traditional recruitment processes the opportunity to build their employability skills and confidence, and have a guaranteed interview at the end.
- We ran courses in May and October in 2022 and in March 2023, with an average of ten participants on each, joining with many different barriers to work including language, disability, learning difficulty and severe lack of confidence or experience.
- Of those who completed the three-day course, over three quarters were employed at Gloucester Services as a result.



Limited Edition

- Limited Edition is a free business skills course, also created by Gloucestershire Gateway Trust in collaboration with Gloucester Services, to give aspiring food producers within the communities we work alongside the opportunity to create a product from scratch to be sold in the Farmshops.
- The first course took place in Autumn 2022 where six participants from the GEM Project created the GEM scones, with over 600 packs sold between November and December 2022.
- On the second course in 2023, four participants from local communities – each with a fledgling business or aspiration to be a food producer – created the Milk Loaf with Fenugreek, which went on sale in September.



“I’m grateful for the opportunity to develop my business skills for free, it has been inspiring and life changing. Taking part in the Limited Edition course has helped me to understand what buyers are looking for and I have learnt so much from the tutor and the other participants. I wish more people could experience this course.”

Viva, a Limited Edition course participant

The GEM Project

- The GEM Project, which had been helping people with barriers to work to move into or closer to employment since 2016, drew to a close at the end of 2022. The project which was managed by Gloucestershire Gateway Trust on behalf of the lead organisation Gloucestershire County Council, was jointly funded by the National Lottery Community Fund and the European Social Fund.
- During 2022 the 2,000th participant registered to join the GEM Project, with key outcomes including 822 people supported into employment, 322 people going into training and education, and 38 Gloucestershire Inclusive Employers awarded.
- The GEM Project was also a finalist in the 2023 Third Sector Awards for the Big Impact category, in recognition of the project’s achievements.



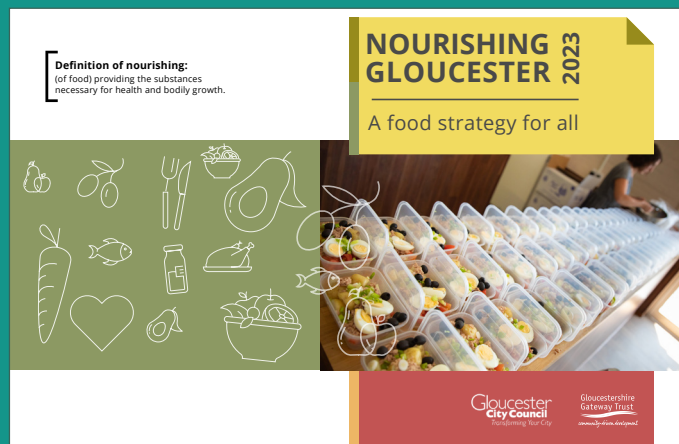
Multiply



- Gloucestershire Gateway Trust have been working with Adult Education in Gloucestershire to bring together community partners and other organisations to deliver government funded Multiply courses, to help adults to improve basic maths skills, targeted at some of the hardest to reach groups.
- Delivery started in March 2023 and courses have included: the opportunity to make a skirt at the Emma Willis Sewing Studio, targeted at women with Bangladeshi heritage and taught in dual language; make a planter at the GL Communities Wood Shed, targeted at local men; and household maths with All Pulling Together for household budgeting. All courses had maths embedded in a practical and interesting way.

Nourishing Gloucester: a food strategy for all

- With strong local community connections and partnerships across the city, Gloucestershire Gateway Trust was asked by Gloucester City Council to write a food strategy for Gloucester that could be rolled out across the city.
- Working with local schools, community groups, community cafés and other organisations we listened to what has worked, what people want and need, and tapped into experts through our partnership with Westmorland Family, such as the Real Farming Trust.
- The outcome, 'Nourishing Gloucester 2023 – a food strategy for all' was published and included a foreword from Henry Dimbleby, a Non-Executive Director of Westmorland Family who had previously written the National Food Strategy.



Our partnership with Gloucester Services



“It meant a great deal to meet and see first-hand the work being done by the communities that inspired and drove Gloucester Services. It really is a remarkable model of a highly effective symbiotic relationship where all parts contribute to and benefit from the core relationships.”

Deborah, Cinderhill Farm

- It has been an exciting year for our partnership with Westmorland Family, as Gloucester Services has continued to go from strength to strength and we have worked together to create opportunities for local people through our Bridging the Gap and Limited Edition courses.
- In March we took eight Gloucester Services food producers along with colleagues from Westmorland Family back to Matson to see where the vision for the M5 services began, and then on to meet some of our community partners. Everyone was inspired and connections were made, with exciting developments coming soon!
- In Autumn 2022 the Channel 4 series 'A Cotswold Farmshop' was filmed at Gloucester Services, including the backstory of our partnership, a focus on our Bridging the Gap course and the impact it's had on some of our participants' lives, and the discovery of some of our talented colleagues.



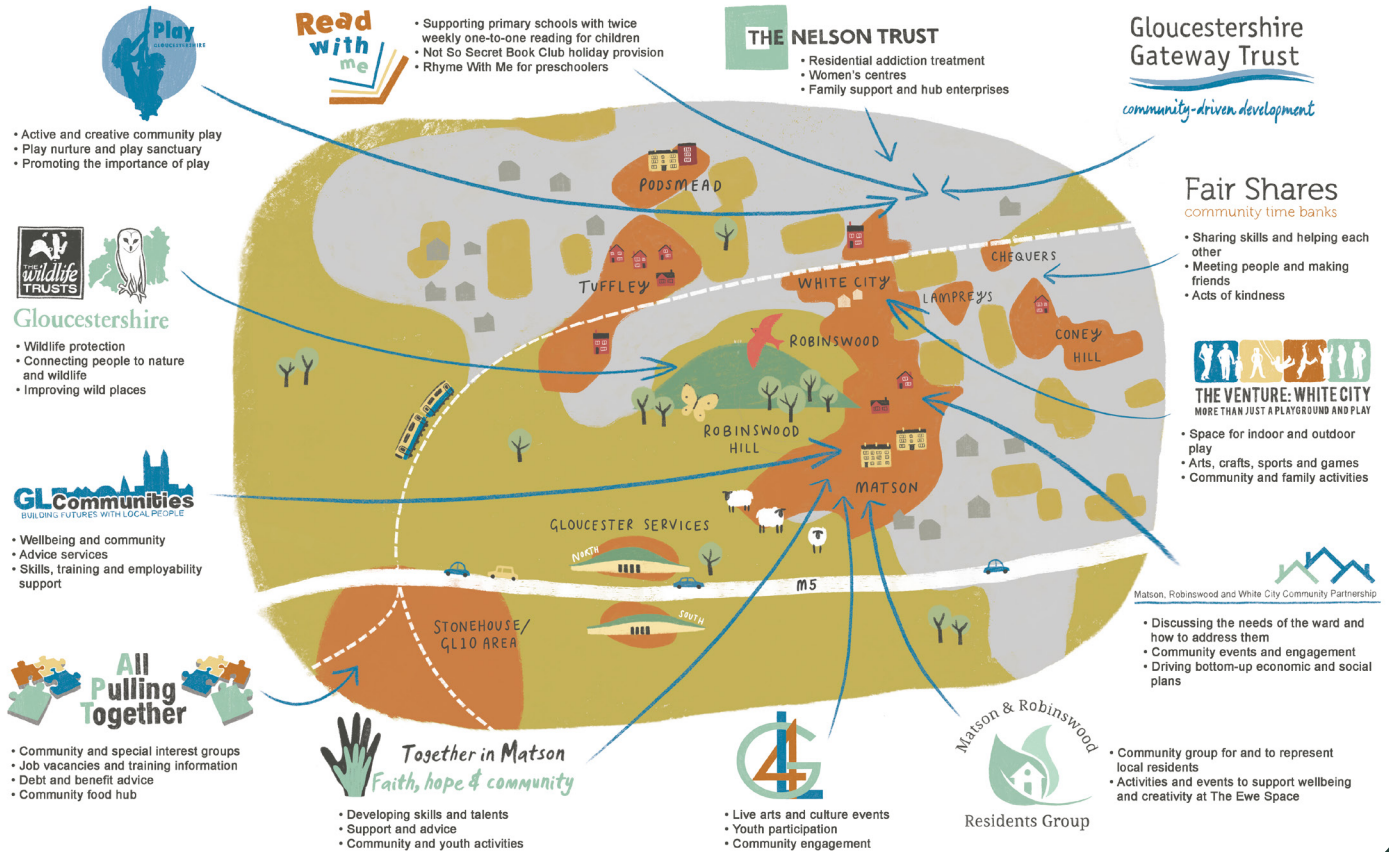
Our Community Partnership

Thanks to our unique partnership with Westmorland, Gloucestershire Gateway Trust receives up to 3p in every £ of non-fuel sales from Gloucester Services, which we reinvest in local people, projects and neighbourhoods with the help of our community partners.

www.gloucestershiregatewaytrust.org.uk

@GlosGateway

@GlosGatewayTrust



- In March 2022 we renewed our partnership with our nine core funded community partners, offering them a further three years of sustainable income from our trust, as well as adding a further three organisations – Read With Me, GL4 CIC and the Matson, Robinswood and White City Partnership.
- We believe long-term community investment is crucial, and our new agreement will see some of our partners having received funding from us for eight consecutive years.
- As well as funding, our community partnership has continued to reap the benefits of collaborating together on projects and events, sharing learnings and supporting one another.

Between 2017 and 2022, Gloucestershire Gateway Trust have reinvested over £2m into projects, groups and organisations in the communities we work with.



“We are thrilled to have become a GGT partner. GGT have always been supportive since GL4 started. Becoming a partner now means we have financial security and can continue to bring high quality events to the community.”

Sarah O'Donnell, GL4 CIC

Looking forward

“We never stop learning about our communities, partners and for our own personal and organisational development. Through our annual community surveys and consultations, residents have made it clear that post COVID-19 their priority going forward is promoting local wellbeing and positive spirit, particularly amongst children and young people. This means that during 2023/24 Gloucestershire Gateway Trust (GGT) will be investing finance and staff capacity into initiatives which encourage young people to ‘rekindle their inner spark’ and self-belief. We will also be working hard to create new and wider partnerships to help communities improve support and opportunities for young families and their children.

We also learn a lot from listening to the feedback from our LOOP (Looking Out for Others Potential) worker team who are having daily conversations with residents in every neighbourhood, encouraging them to say what is important to them and to find neighbours who feel the same so that they can take action together to create the communities they want.

It is this resident feedback that also drives our work with local employers like Gloucester Services, local housebuilders and schools where we strive to create or support accessible local job opportunities. We do this by providing pre-employment training such as our excellent ‘Bridging the Gap’ courses and broader adult education opportunities to build confidence, improve basic skills and to upgrade job specific knowledge. In 2023/24 we plan to continue to grow these opportunities in our neighbourhoods as we know good, sustainable jobs provide the best opportunity for many people to get out of economic poverty.

2023/24 is the midpoint of our second programme of community investment through which we are investing £20,000 per year in each of our 12 community partners. We remain committed to this widespread investment in capacity building in our neighbourhoods. However this programme will end in March 2025 and we will need to start considering what our future investment strategy will be post this period during this current year.

www.gloucestershiregatewaytrust.org.uk

office@ggtrust.org

 [@GlosGatewayTrust](https://www.instagram.com/GlosGatewayTrust) |  [@GlosGatewayTrust](https://www.facebook.com/GlosGatewayTrust)

 [@Gloucestershire Gateway Trust](https://www.linkedin.com/company/Gloucestershire-Gateway-Trust) |  [@GlosGateway](https://twitter.com/GlosGateway)

Registered office address: Wiggin Osborne Fullerlove, 95 The Promenade, Cheltenham, GL50 1HH

Correspondence address: City Works, Alfred Street, Gloucester, GL1 4DF

Registered Charity number: 1140440. Company limited by guarantee number: 6857427

Printed on recycled paper



Mark Gale,
Chief Executive of
Gloucestershire Gateway
Trust with Sarah Dunning,
Chair of Westmorland Family,
at Gloucester Services

Part of this consideration will be how we build our support in Podsmead particularly for the new multi-million pound Blackbridge Community and Sports Hub being developed by the resident-led Blackbridge Charitable Community Benefit Society. GGT has wholeheartedly stood behind this organisation as it has grown from scratch in 2021 and we are excited by the potential that the new Youth and Community Work teams are creating. We believe this organisation and its new Community and Sports Hub will be an important community asset and a home to many shining examples of community building. We are all very excited about the potential for the Podsmead work and expect to make important progress in the coming year.”

Mark Gale
Chief Executive
Gloucestershire Gateway Trust

Gloucestershire
Gateway Trust

community-driven development